



# RISO **CV** T200

---

B4 size

---

Speed 100 ppm printing

---

Image-quality 300 dpi x 300 dpi

---

Easy-to-use LED panel

---

Convenient USB PC connectivity

---

## Creating Value

*Delivering what customers value for sophisticated,  
yet convenient and cost-effective printing*



# Versatility, quality and speed – the best in economical printing

- Value 1** Compact size
- Value 2** Easy operation
- Value 3** The affordable printing solution



## RISO CV1200

### High-speed printing of 100ppm

The CV1200 provides high-speed printing of up to 100 ppm which means 500 pages in just 5 minutes.

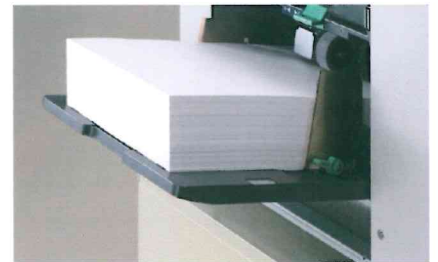
#### Time required to print 500 pages

General B&W Photocopiers/Laser Printers	13 minutes
B&W Photocopiers/Laser Printers (40 ppm)	
<b>CV1200</b>	<b>5 minutes</b>

### Adequate paper capacity

The paper trays have a capacity of approx. 1,000 sheets for feeding and approx. 800 sheets for receiving, which ensures uninterrupted printing over a longer period.

Note: The paper capacity depends on paper type.



## Easy ink and master setting

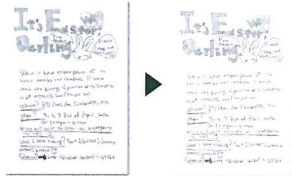
Setting ink and masters is little more than a one-touch operation: simply insert the ink cartridge and twist into place, or replace the master roll, close the lever and insert the master sheet into the feed area.

## Disposal box

The disposal box holds up to 30 used masters, ready for you to throw them away whenever it's convenient.

## Auto base control

Auto base control automatically compensates for originals made on recycled paper, removing the background greyness so your output always has a clear, white background.



## 300dpi printing

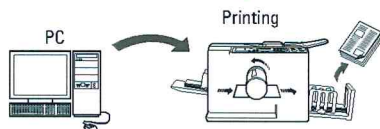
300dpi x 300dpi scanning and printing gives beautiful results with even small letters clear and legible.

## Intuitive operation

Dedicated buttons, give intuitive, no-miss operation. All tasks are easily controlled at your fingertips.

## Convenient USB PC connectivity

With USB cable, you can simply connect the CV1200 to your PC. Directly connecting to a PC enables higher-quality image printing.

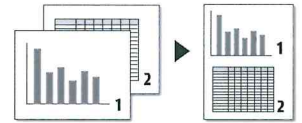


## Line/photo/duo/pencil

Four scanning modes to best suit your original. Line is for text-only documents, photo is optimized for photos or illustrations, duo gives the best results with documents that are a mix of photos and text, while pencil is for illustrations drawn in pencil.

## 2 up/2 in 1 printing

2 up lets you print two copies of a single original side-by-side on one sheet of paper, while 2 in 1 lets you print two different originals side-by-side on a single sheet.



## Three enlargement and four reduction settings

Easy operation with preset buttons. Just press your required size, it's fail-proof.

## Energy Saving

Energy system with low power consumption.

The CV series consumes 1/10th the energy, compared with ENERGY STAR® guidelines.

\* ENERGY STAR qualified and RoHS certified  
\* Complies with the ErP directive in Europe

## RISO i QualitySystem™

Recognizes master and ink information by two-way communication with attached RF tag and adjusts the performance automatically. This contributes to quality stability and improvement. It also supports inventory control of consumables.

The RISO i Quality mark indicates a RISO product compatible with the RISO i Quality System.



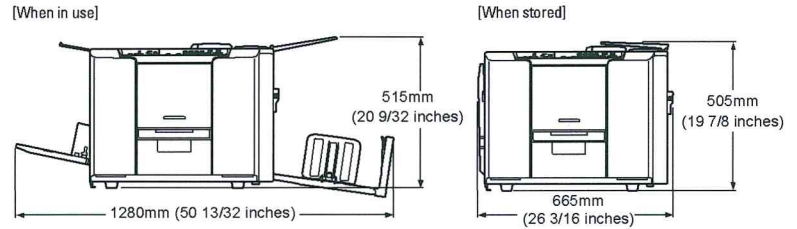


RISO MASTER CV B4  
(200 sheets per roll)



RISO INK CV BLACK  
(800ml per cartridge)

### Dimensions



### Specifications

<b>Master Making / Printing Methods</b>	High-speed digital master-making/Fully automatic printing	
<b>Original type</b>	Sheet	
<b>Original Size(min./max.)</b>	90mm x 140mm to 310mm x 435mm (3 17/32 inches x 5 1/2 inches to 12 7/32 inches x 17 1/8 inches)	
<b>Original Paper Weight</b>	50 gsm to 107 gsm (13-lb bond to 29-lb bond)	
<b>Original Paper Capacity</b>	1 Sheet	
<b>Scanning Area (max.)</b>	297mm x 435mm (11 11/16 inches x 17 1/8 inches)	
<b>Printing Paper Size (min./max.)</b>	100mm x 148mm to 297mm x 420mm (3 15/16 inches x 5 13/16 inches to 11 11/16 inches x 16 17/32 inches)	
<b>Paper Supply Capacity</b>	Approx. 1000 sheets, 64 gsm to 80 gsm (17-lb bond to 21-lb bond)/Maximum stacking height: 110mm (4 11/32)	
<b>Paper Receiving Capacity</b>	Approx. 800 sheets, 64 gsm to 80 gsm (17-lb bond to 21-lb bond)/Maximum stacking height: 90mm (3 17/32)	
<b>Printing Paper Weight</b>	35 gsm to 128 gsm (9-lb bond to 34-lb bond)	
<b>Image Processing Mode</b>	Line, Photo, Duo, Pencil	
<b>Resolution (Scanning and Printing)</b>	300dpi x 300dpi	
<b>Master-making Time</b>	Approx. 39 seconds or less (for B4 originals/short edge feed/100% reproduction ratio)	
<b>Printing Area (max.)</b>	In units of mm: 251mm x 357mm (9 7/8 inches x 14 1/16 inches) In units of inches: 210mm x 349mm (8 9/32 inches x 13 3/4 inches)	
<b>Print Reproduction Ratio</b>	In units of mm: 100% reduction ratio, Enlargement (141%, 122%, 116%), Reduction (94%, 87%, 82%, 71%) In units of inches: 100% reduction ratio, Enlargement (154%, 129%, 121%), Reduction (94%, 78%, 65%, 61%)	
<b>Print Speed</b>	3 levels: 60, 80, and 100ppm	
<b>Print Position Adjustment</b>	Horizontal: ±10mm Vertical: ±10mm*1, (Horizontal: ±13/32 inches, Vertical: ±13/32 inches)	
<b>Ink Supply</b>	Full automatic (800 ml/cartridge)	
<b>Master Supply/Disposal</b>	Full automatic (B4: approx. 200 sheets per roll)/Disposal capacity: approx. 30 sheets	
<b>User Interface</b>	LED panel	
<b>Computer Connection</b>	USB PC Interface	
<b>Optional Accessories</b>	Not Available	
<b>Operating Noise</b>	Max. 69dB(A) (when printing 100 sheets per minute in the operator position)	
<b>Power Source</b>	AC100-120V/220-240V, 50-60 Hz <2.0A/1.0A>	
<b>Power Consumption</b>	Max. 160W, Ready: 15W or lower, Sleep: 10W or lower, Power-OFF: 0.5W or lower	
<b>Functions</b>	Original Scanning Mode, Scanning Level, Enlargement/Reproduction, 2-Up, Speed, Print Position, Program, Idling, Confidential, Meter Display, Proof, Direct Printing, Auto Sleep Setting, Auto Power-OFF Setting, RISO iQuality System	
<b>Dimensions (W×D×H)</b>	<b>In Use</b>	1280mm x 655mm x 515mm (50 13/32 inches x 25 25/32 inches x 20 9/32 inches)
	<b>In Storage</b>	665mm x 655mm x 505mm (26 3/16 inches x 25 25/32 inches x 19 7/8 inches)
<b>Required Space (W×D×H)</b>	1280mm x 1255mm x 845mm (50 13/32 inches x 49 13/32 inches x 33 9/32 inches)	
<b>Weight</b>	Approx. 64kg (141lb) <sup>*2</sup>	

\*1 If the width of the paper surpasses 277mm (10 29/32 inches), the vertical position adjustment width narrows depending on the width of the paper.

\*2 The weight does not include the ink and master roll.

Notes: Specifications are subject to change without notice.

For more details please contact:

RISO, RISO iQualitySystem and are trademarks or registered trademarks of RISO KAGAKU CORPORATION in the United States and other countries. Other corporate names and/or trademarks are either registered trademarks or trademarks of each company, respectively. Copyright ©2017 RISO KAGAKU CORPORATION. All rights reserved.



RISO KAGAKU CORPORATION  
 5-34-7 Shiba, Minato-ku, Tokyo 108-8385 Japan  
<http://www.riso.com/>